



DATA SHEET AIR DRAIN TRAP FLOAT PB-350 1/2" and 3/4"



The PB 350 float steam traps are intended for draining condensate in compressed air and other gases in activities or equipment that require the removal of condensate. Easy maintenance and low cost, KLINGER float traps guarantee efficiency and durability due to their constructive shape, as the KLINGER float trap has a condensate seal that does not allow the passage of gases to the condensate line.

OPERATION CONDITIONS:

- » OR, maximum operating pressure: 14 bar @ 198 °C - OR 351;
- » OR, maximum operating pressure: 10 bar @ 184 °C - OR 352;
- » OR, maximum operating pressure: 4,5 bar @ 156 °C - OR 353;
- » Maximum pressure of maximum: 17,6 bar @ 208°C.

DIAMETERS AND CONNECTIONS:

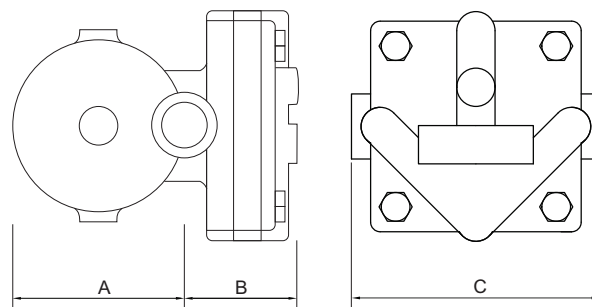
- » 1/2" and 3/4";
- » BSP and NPT thread;
- » Flanges adapted class 150#.



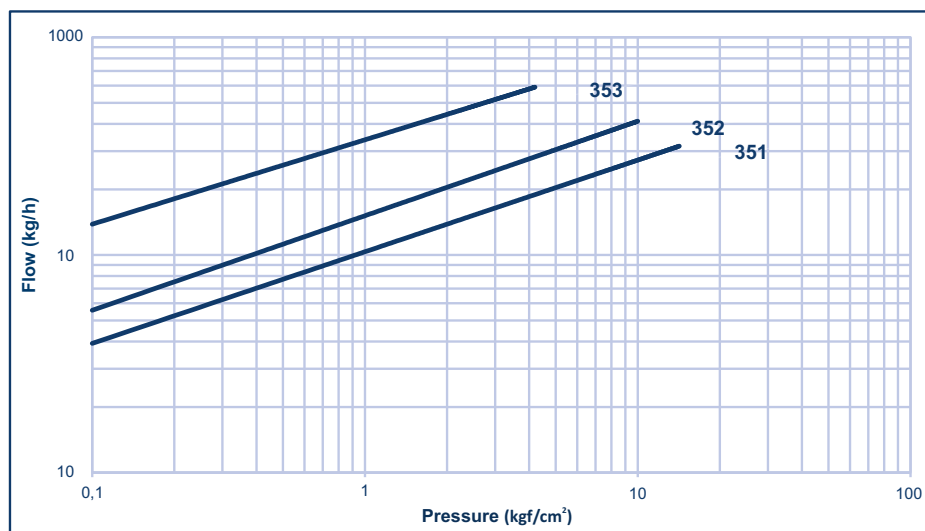
MEASURES:

DN	A	B	C-NPT	C*	WEIGHT (KG)
1/2"	88	77	120	194	4,0
3/4"	88	77	120	194	4,0

C* - Face a face com flanges adaptadas



FLOW CAPACITY



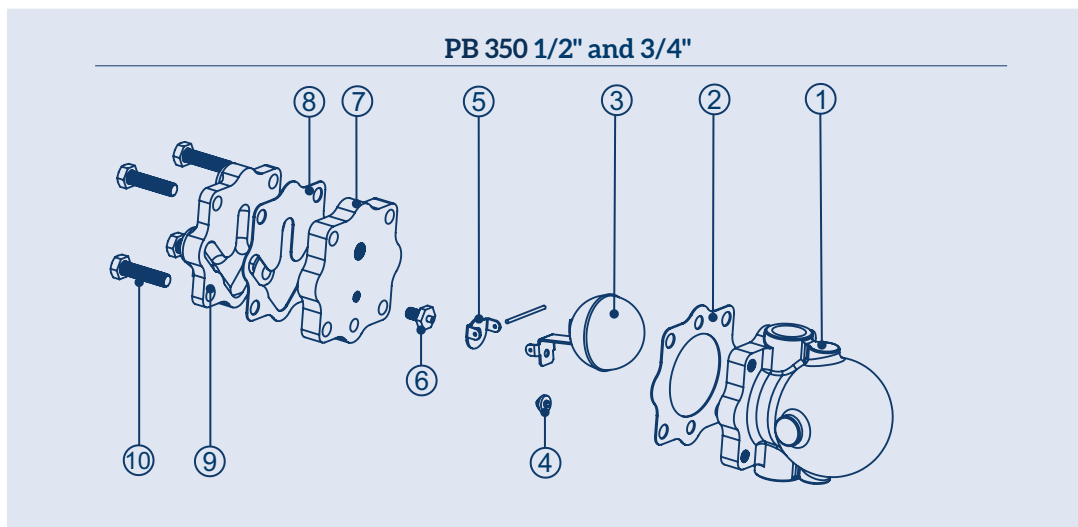


DATA SHEET AIR DRAIN TRAP FLOAT PB-350 1/2" and 3/4"

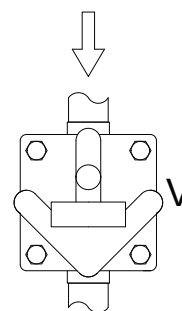
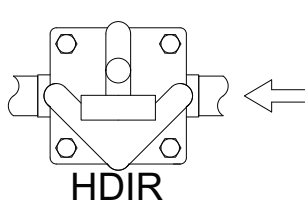
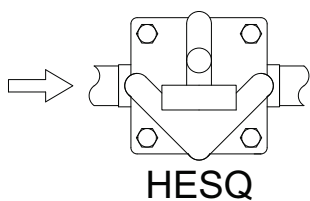


MATERIAL:

ITEM	DESCRIPTION	MATERIAL
1	Body	Cast iron ASTM A 126 CL B
2	Body sealing	Graphite
3	Floater	Stainless steel AISI 304
4	Shutter	Neoprene
5	Support	Stainless steel AISI 304
6	Seat	Stainless steel AISI 304
7	Flange	Cast iron ASTM A 126 CL B
8	Cap sealing	Graphite
9	Cap	Cast iron ASTM A 126 CL B
10	Screws	Carbon steel



ASSEMBLING POSITIONS



Default position: HESQ | Other positions: on request