



DATA SHEET STEAM TRAP FLOAT PB-150 1/2" and 3/4"



PB 150 float steam trap is an excellent cost-effective option for draining condensate in equipment where the pressure variation is large, such as heat exchangers, coils, heating jackets, etc. Due to its constructive shape, KLINGER float steam trap has a condensate seal that does not allow the passage of live steam into the condensate line.

Easy maintenance and low cost, KLINGER float steam trap has the thermostatic air eliminator (bimetallic) as standard which guarantees efficiency and durability.

CONDIÇÕES DE OPERAÇÃO:

- » OR151, maximum operating pressure: 14 bar @ 198 °C;
- » OR152, maximum operating pressure: 10 bar @ 184 °C;
- » OR153, maximum operating pressure: 4.5 bar @ 156 °C;
- » Maximum pressure of maximum bar: 17.6 @ 208C.

DIAMETERS AND CONNECTIONS:

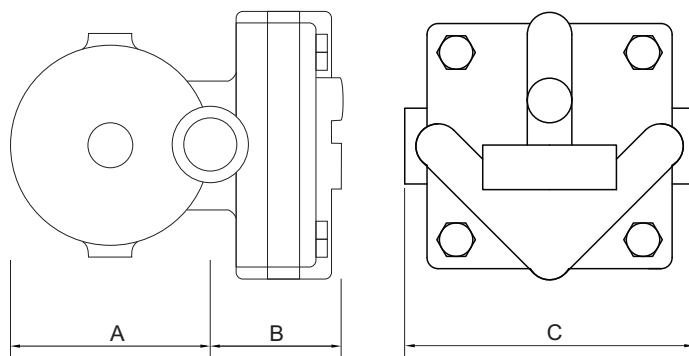
- » 1/2" and 3/4";
- » BSP and NPT thread;
- » Flanges adapted class 150#.



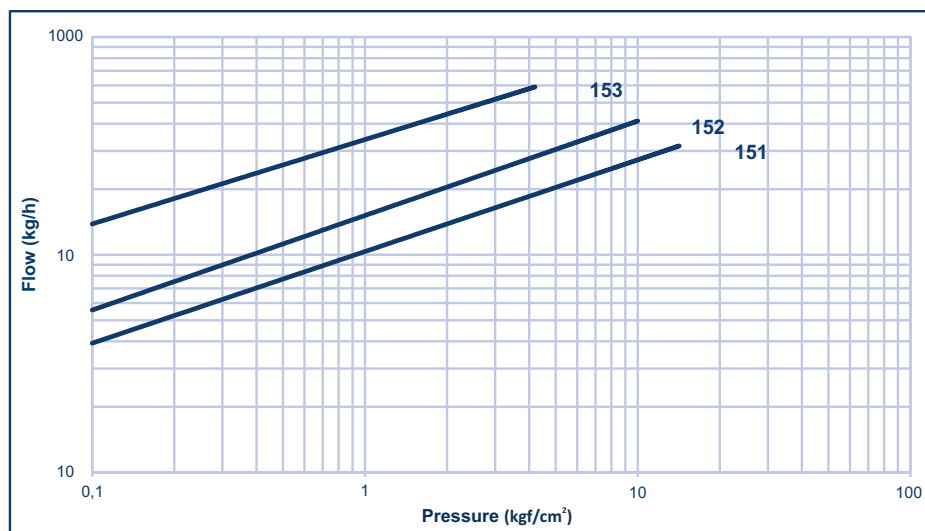
MEASURES:

DN	A	B	C- NPT	C*	WEIGHT (KG)
1/2"	88	77	120	188	4,0
3/4"	88	77	120	188	4,0

C* - Face to face with adapted flanges



FLOW CAPACITY



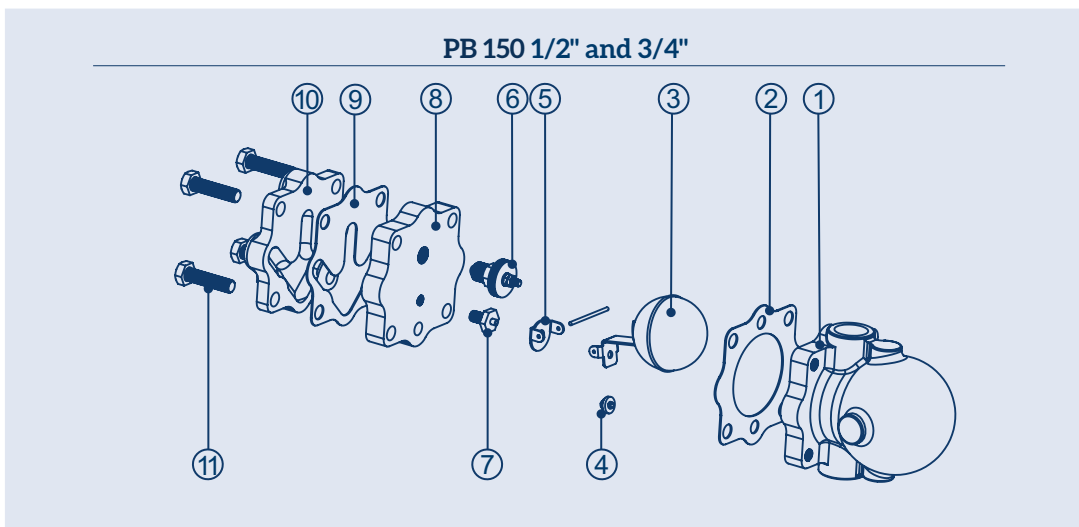


DATA SHEET STEAM TRAP FLOAT PB-150 1/2" and 3/4"

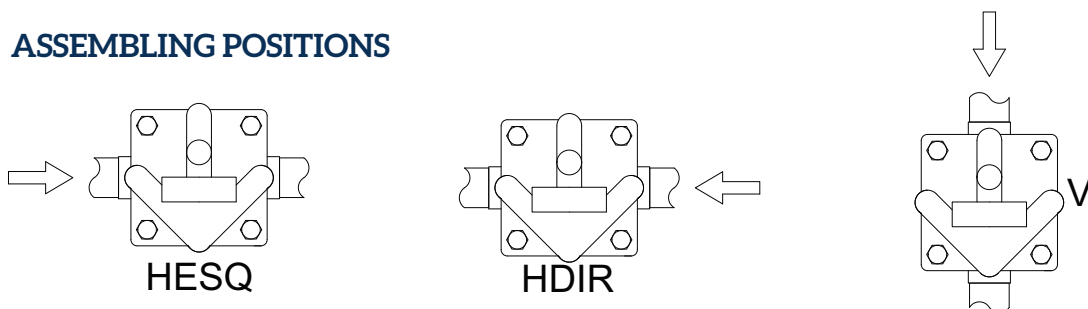


MATERIAL:

ITEM	DESCRIPTION	MATERIAL
1	Body	Cast iron ASTM A126 CL B
2	Body seal	Graphite
3	Floater	Stainless steel AISI 304
4	Shutter	Stainless steel AISI 304
5	Support	Stainless steel AISI 304
6	Thermostatic valve	Bimetallic element GB14
7	Seat	Stainless steel AISI 304
8	Flange	Cast iron ASTM A126 CL B
9	Cap sealing	Graphite
10	Cap	Cast iron ASTM A126 CL B
11	Screws	Carbon steel



ASSEMBLING POSITIONS



Default position: HESQ | Other positions: on request